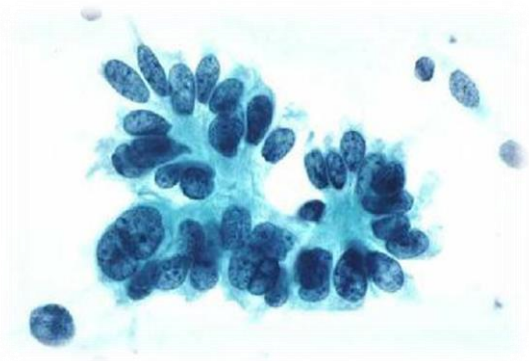
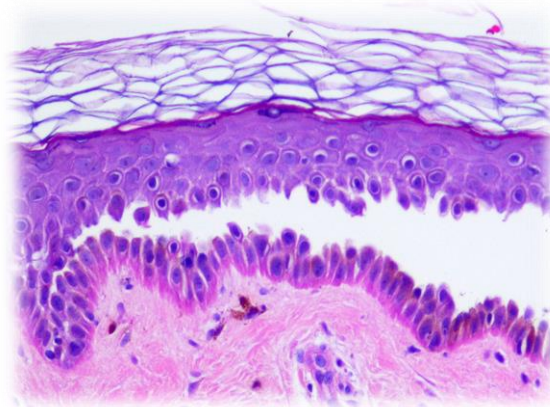


MSc Clinical Science (Cellular Sciences)

Cytopathology



Histopathology



Reproductive Science



Genetic and Molecular Science





Manchester
Metropolitan
University

University of
Salford
MANCHESTER



The University of Manchester

Central Manchester University Hospitals



NHS Foundation Trust

Delivery and Assessment

Lectures - Tutorials – Student-led Teaching -
Blended learning

Teaching delivered by academic staff from MMU, UoM and
University of Salford.

Clinical colleagues from St. Mary's Hospital, MRI, CMFT,
Manchester Cytology Centre, Wythenshawe Hospital

Assessment: coursework and examination

Programme Timetable

- Induction- trainee's and supervisor's
- Front loaded teaching in the first year to support workplace rotations
- Blended learning to allow greater flexibility for trainees and their supervisors
- Opportunities to network with other Healthcare Science trainees

Year 1	
September	Commence role; Complete enrolment
October	Weeks 1-4
November	Weeks 5-6
December	Divisional Rotations

Year 2

Research Methods (10 credits) and
Introduce Research Project 1 (30
credits)

20 credits specialism

Histopathology and cytopathology

Pathological basis of disease and
systematic investigation of pathological
specimens

Reproductive science

Infertility, treatment and role of regulation,
gametes and fertilisation

Year 2	
September	Research Methods; Research Project
November	Specialism
February	Specialism

Year 3

Research Project 2 (30 credits)

30 credits specialism (3x1 week)

Histopathology

Cytopathology

Major organ cellular pathology

Reproductive Science

Embryology, culture of gametes and embryos, micromanipulation and cryopreservation

MAHSE Research Conference

Year 3	
September	Research Project 2
October	Specialism
	Specialism
	Specialism
May	Poster Conference