

Introduction to STP (Clinical Science) Clinical Pharmaceutical Sciences

Manchester Pharmacy School

- 9 Professors
- 18 Lecturers/Senior Lecturers/Reader
- 29 Post doc researchers
- 7 Teaching Fellows/Senior Teaching Fellows
- 'Visiting' teaching staff
- 25 Technical & Administrative support staff
- 180 UG (M Pharm) students per annum
- 88 PhD students
- 100 CPPE team members

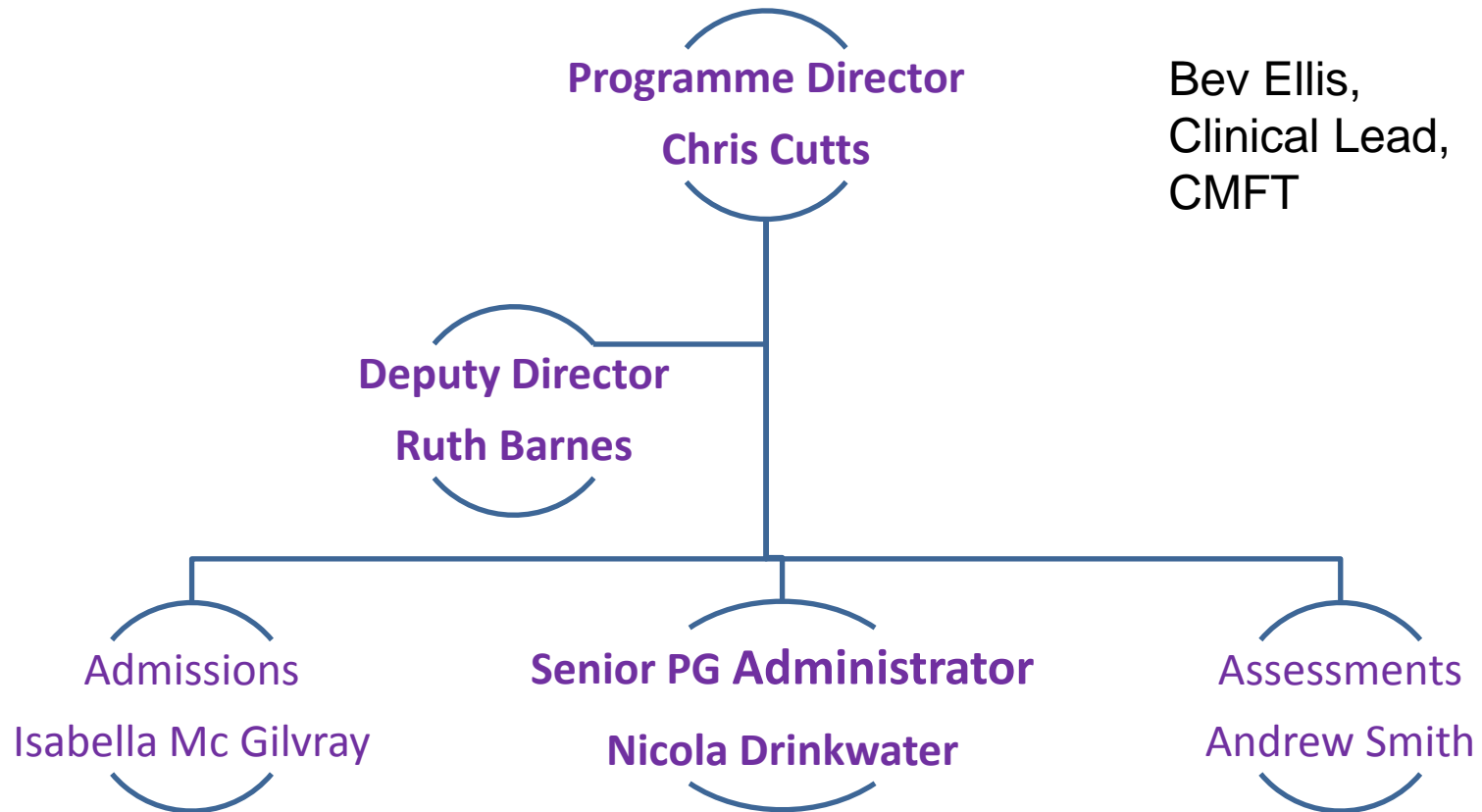
We also run 8 different Postgraduate Taught courses leading to a Masters Qualification:

**MSc Clinical Science
(Clinical Pharmaceutical Science)
&
MSc in
Pharmaceutical Technology and
Quality Assurance**

Outcomes of the PTQA/CPS

- NHS service led curriculum
- Patients and service
- Safety and quality
- Career development
- Future workforce: Developments, capacity and planning

MSc in PTQA/CPS : Administrative Team

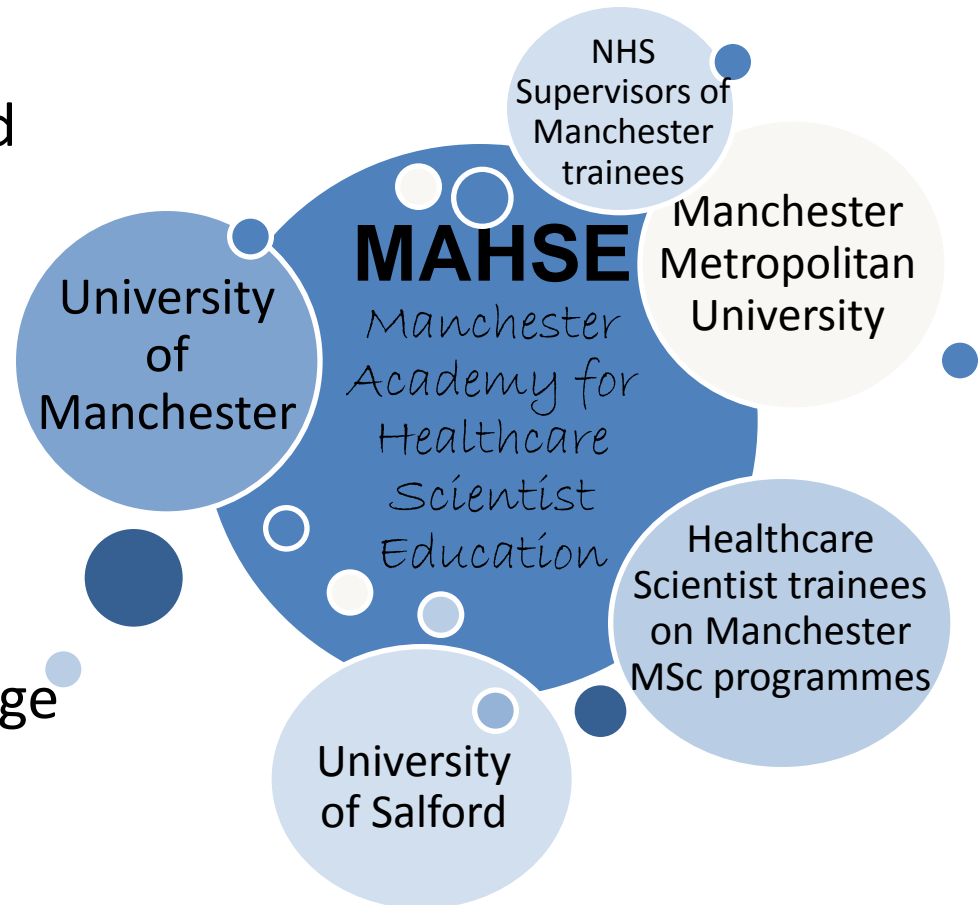


Nicola.Drinkwater@manchester.ac.uk

Tel: +44 (0) 161 306 0597

MAHSE

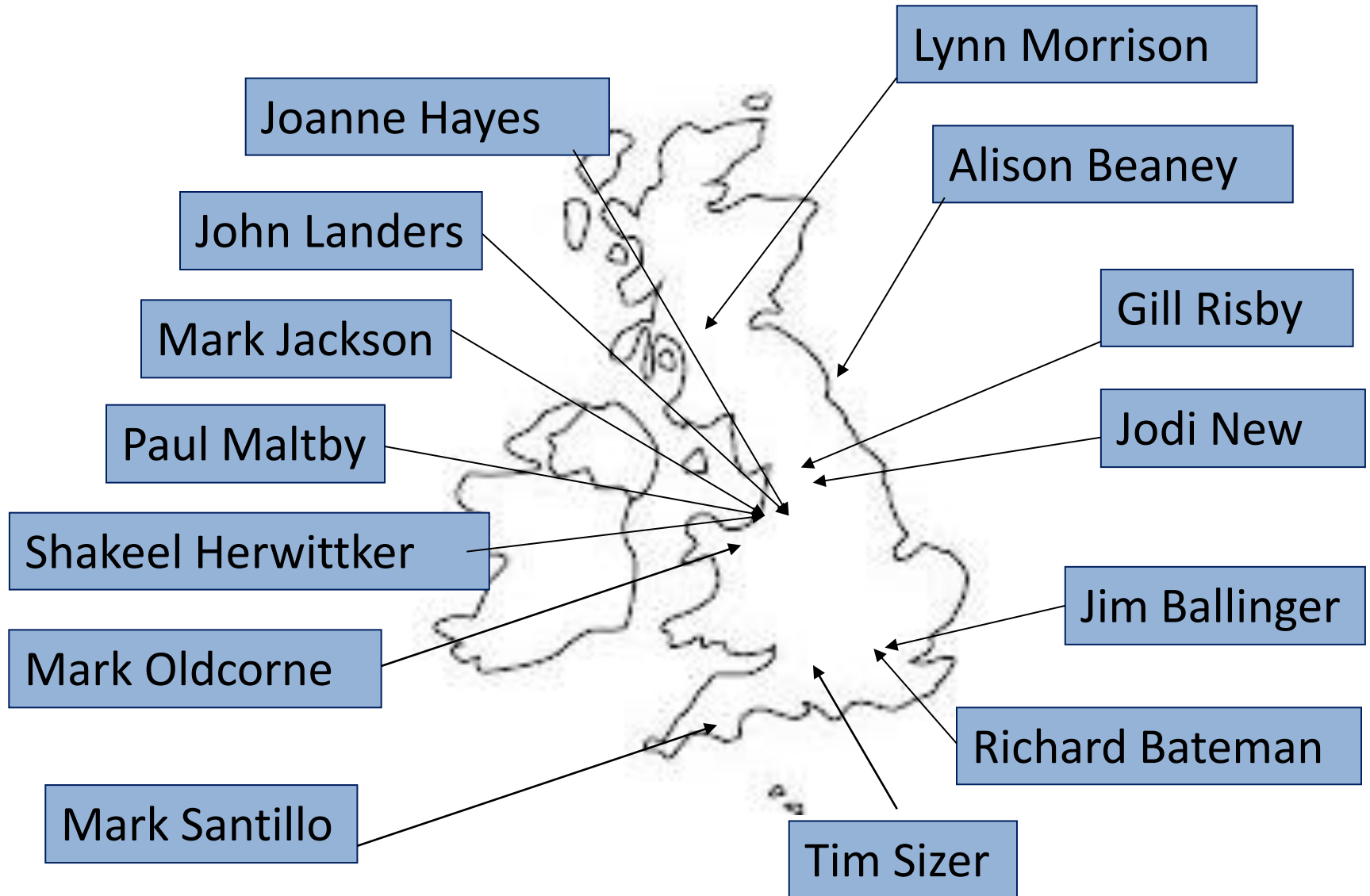
- Partnership between HEIs and NHS
- Encourages innovation and sharing of good practice
- Support and develop PTP/STP programmes delivered in Manchester
- Interprofessional teaching and learning
- Other HEIs e.g. Kings College London (Radiopharmacy), Liverpool, Leeds



Strong links with NHS Trusts

- Stockport NHS Foundation Trust (CPS & MPharm)
 - Classical Manufacturing
 - Aseptic services
 - QA/QC services
- Calderdale and Huddersfield NHS Foundation Trust
 - Classical Manufacturing
- Central Manchester NHS Foundation Trust
 - Radiopharmacy

Examples of collaboration with the NHS on teaching



Patient / Service User Engagement

- Programme issues
 - Limited patient facing opportunities
 - Significant contribution such as drug safety, quality of medicines, chemotherapy, neonatal CIVAS, etc
- Examples of involvement
 - Use pathways in teaching
 - Explain role to a lay group
 - Discussion forums
 - Patient talks about experiences



Year One

Credits	Unit	Date
Compulsory units:		
30	Introduction to PTQA	30/09/2014
	Foundations of PTQA	01/10/2014 03-07/11/2014
Choose one unit:		
30	Introduction to Clinical Pharmaceutical Science 2 + Radiopharmacy, + Aseptics + Formulations sciences	09-12/12/2014
		19-23/01/2014
		13-17/04/2014
30	Introduction to Clinical Pharmaceutical Science 3 + Production + Aseptics + Formulations sciences	08-12/12/2014
		19-23/01/2015
		13-17/04/2015

Need to choose?

Formulation
sciences

or

Radiopharmacy

Year Two

Credits	Unit	Date
Compulsory units:		
15	Quality Control	28/09 - 02/10/2015
15	Aseptics Advanced	18-22/01/2016
Choose two units:		
15	Medical gas testing	Nov-15
15	Pharmaceutical risk management and the role of the QP	29/02 - 04/03/2016
15	Radiopharmacy Advanced	Mar-16
15	Clinical trials	Apr-16

Key:

CPD modules run by Leeds

Clinical Pharmaceutical Science

Professional
Practice

[15 credits]

Regulation &
QA

[15 credits]

Radiopharmacy
(1)

[10 credits]

Aseptics (1)

[10 credits]

Manufacturing

[10 credits]

Research
methods

[15 credits]

Production

[15 credits]

QA & QC

[15 credits]

Research
project (1)

[15 credits]

Aseptics (2)

[15 credits]

Radiopharmacy
(2)

[15 credits]

Research
project (2)

[30 credits]

Chancellors Conference Centre



Chancellors Conference Centre



What covered:

- Hotel room, breakfast, lunch, dinner and refreshments during the study days

What's not covered:

- Additional meals, any other drinks outside study times (ie with dinner), phone calls, partners staying, transport/travel

Our ethos and culture

