

# STP Open Day Blood Sciences

January 2018

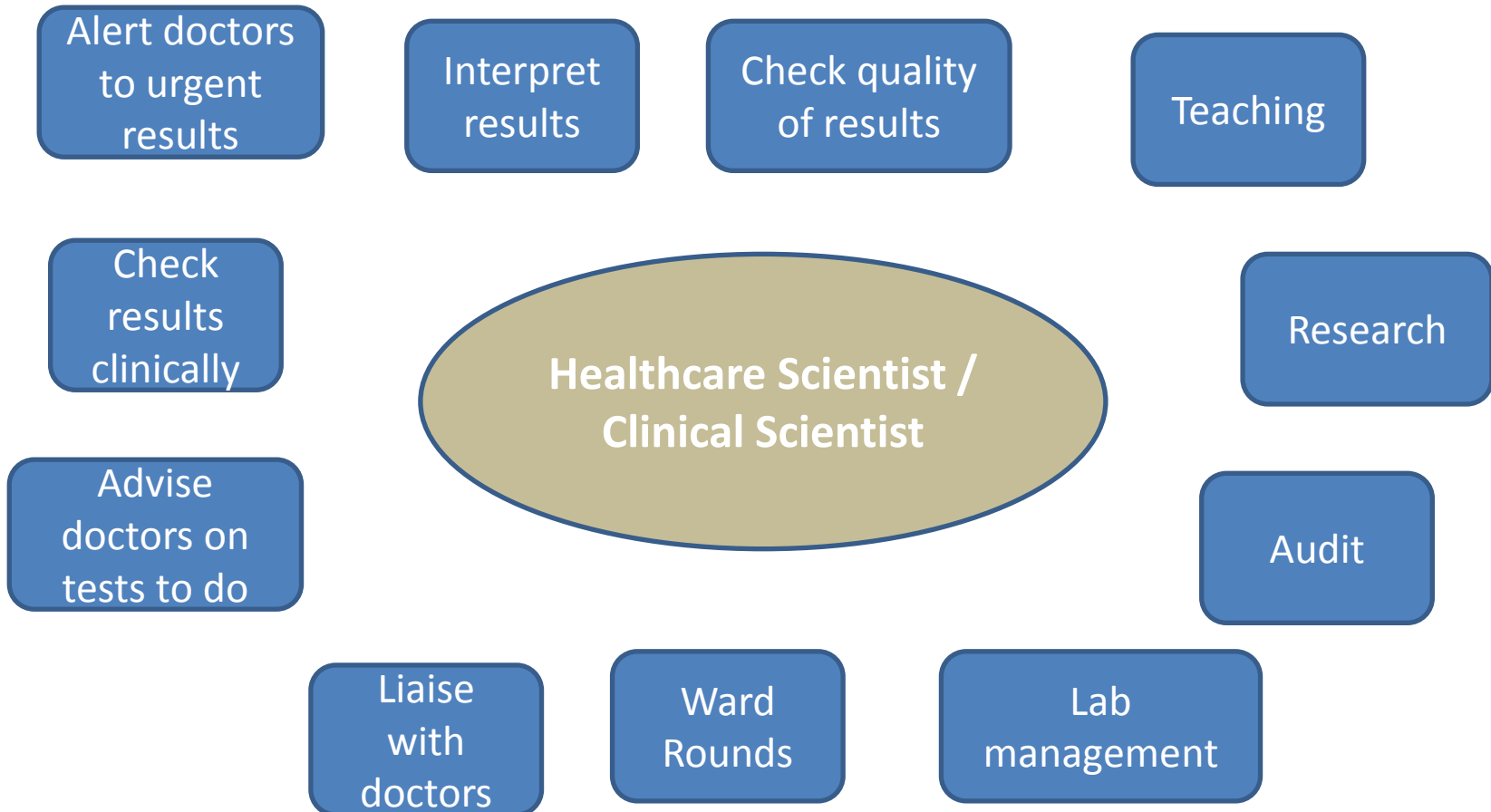


# Blood Sciences

## Individual disciplines

- *Clinical Biochemistry*
- *Clinical Immunology*
- *Haematology & Transfusion Sciences*
- *Histocompatibility & Immunogenetics*

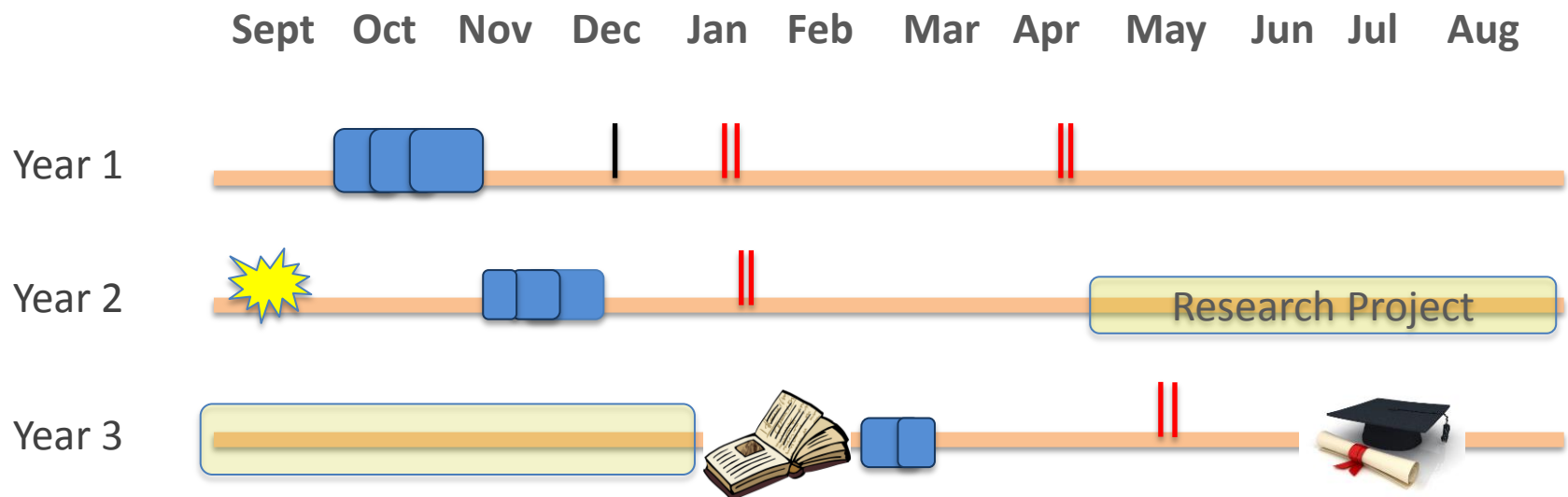
# What do Healthcare Scientists in blood science do?



## Masters Programme Structure (Blood Science)

Year 1	<b>Professional Practice</b> (15 credits)	<b>Analytical Methods</b> (15 credits)	<b>Introduction to Blood Sciences</b> (30 credits) <ul style="list-style-type: none"> <li>Clinical Immunology</li> <li>Clinical Biochemistry</li> <li>Haematology and Transfusion Science</li> <li>Genetics and molecular science</li> </ul>	
Year 2	<b>Clinical Biochemistry</b>	<b>Clinical Immunology</b>	<b>Histocompatibility &amp; Immunogenetics (H&amp;I)</b>	<b>Haematology &amp; Transfusion science</b>
	Research Methods			Clinical Haematology (10 credits)
	Diseases of the Major Organs (15 credits)	Immunology and Infection (15 credits)	Histocompatibility (15 credits)	Transfusion (10 credits)
	Endocrinology (15 credits)	Immunodeficiency and Immunotherapy (15 credits)	Immunodeficiency and Immunotherapy (15 credits)	Research Methods (10 credits)
	Research Project (30 credits)	Research Project (30 credits)	Research Project (30 credits)	Research Project (30 credits)
Year 3	Nutrition & Drug Monitoring (15 credits)	Adv Clinical Immunology (30 credits) <ul style="list-style-type: none"> <li>Hypersensitivity &amp; Allergy</li> <li>Haematology Malignancy &amp; Transplantation</li> <li>Autoimmunity</li> </ul>	Advanced H&I (30 credits) <ul style="list-style-type: none"> <li>Hypersensitivity &amp; Allergy</li> <li>Haematology Malignancy &amp; Transplantation</li> <li>Haemopoetic stem cell Transplantation</li> </ul>	Haemostasis (10 credits)
	Paediatric Biochemistry (15 credits)			Haematological Malignancy (10 credits)
	Research Project (30 credits)			Transfusion 2 (10 credits)
	Research Project (30 credits)	Research Project (30 credits)	Research Project (30 credits)	Research Project (30 credits)

# MSc Timeline example (Biochemistry)



Teaching block in Manchester

Assignment deadline

Exam in Manchester

Project idea / research proposal submitted

Dissertation deadline

# Delivery Timetable

Year 1: 6 week block (Nov-Dec)

Year 2: 5 weeks (max) – may consist of single or multiple week blocks depending on specialist pathway

Year 3: 4 weeks (max) – may consist of single or multiple week blocks depending on specialist pathway

Research Project:

Completed between end of taught units in year 2 and beginning of taught units in year 3 (Base hospital)

# Credit weightings

- **180 credits in total**
  - 120 credits taught
  - 60 credits research project
  - 1 credit = 10 hours study; 1 hour contact, 9 hours self directed (varies between programmes)
- **National School stipulates 1 day/week academic work**
  - Does not include OLAT
  - Does not include time in Manchester

# Teaching delivery

- **Block Release**
- **Varied sessions:**
  - Face-2-face lectures
  - Recorded lectures
  - E-learning packages
  - Workshops
  - Group work
  - Problem based learning
  - Simulated scenarios
- **Taught by academics but mostly NHS professionals.**





# Blood Science Programme members

Phil Macdonald (Clinical Lecturer)	Programme Director / Biochemistry pathway lead	<a href="mailto:philip.macdonald@manchester.ac.uk">philip.macdonald@manchester.ac.uk</a>
Kath Hayden (NHS) (Consultant Biochemist)	Clinical lead (Biochemistry)	<a href="mailto:Katharine.Hayden@CMFT.nhs.uk">Katharine.Hayden@CMFT.nhs.uk</a>
Joanne Pennock (Lecturer)	Clinical Immunology Pathway Lead	<a href="mailto:joanne.l.pennock@manchester.ac.uk">joanne.l.pennock@manchester.ac.uk</a>
Anthony Rowbottom (NHS) (Consultant immunologist)	Clinical lead (Immunology)	<a href="mailto:Anthony.Rowbottom@lthtr.nhs.uk">Anthony.Rowbottom@lthtr.nhs.uk</a>
Amanda Robson (NHS) (Principal Clinical Scientist)	Clinical lead & H&I pathway lead	<a href="mailto:Amanda.Robson@cmft.nhs.uk">Amanda.Robson@cmft.nhs.uk</a>
Ciaren Graham	Haematology & Transfusion pathway lead	<a href="mailto:c.graham@mmu.ac.uk"><u>c.graham@mmu.ac.uk</u></a>

# NHS Curriculum



MODERNISING SCIENTIFIC CAREERS

Scientist Training Programme  
MSc in CLINICAL SCIENCE  
Curriculum

BLOOD SCIENCES

2013/14

ACADEMIC

Modernising Scientific Careers



Science in healthcare DRIVING A MODERN NHS



MODERNISING SCIENTIFIC CAREERS

Scientist Training Programme  
Work Based Training

Learning Guide

BLOOD SCIENCES

2012/13

WORKPLACE





Manchester Academy for  
Healthcare Scientist Education



# Information

[www.mahse.co.uk](http://www.mahse.co.uk)



Thank you

Questions??