



The Royal College of Pathologists  
Pathology: the science behind the cure

# **The Role of the Royal College of Pathologists and FRCPath**

**Joanne Brinklow**

**Director of Learning**

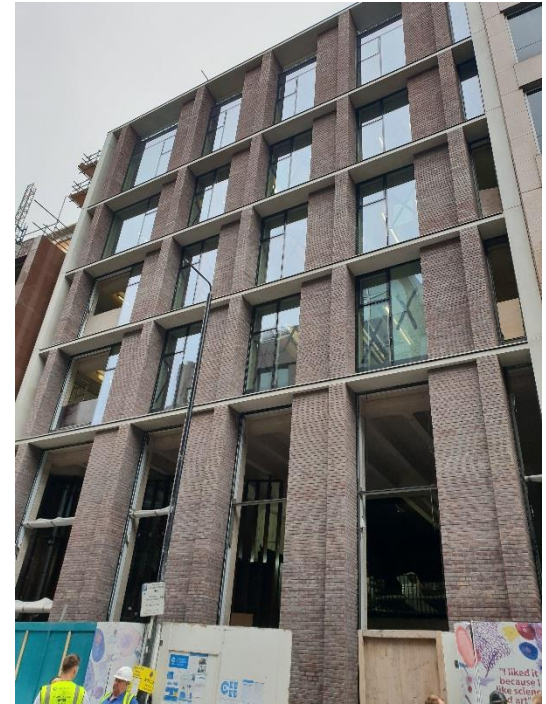
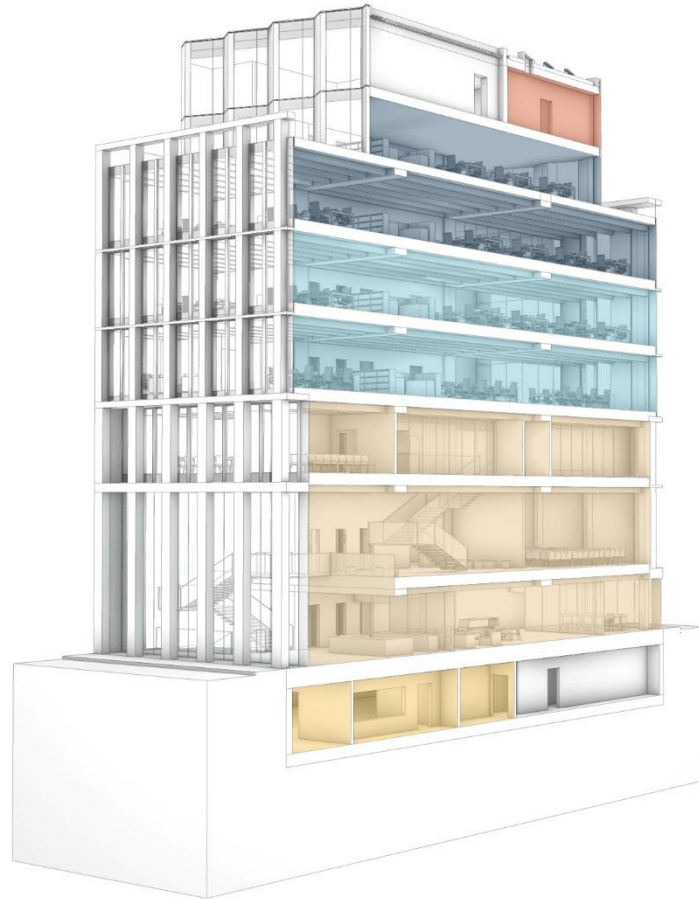
**The Royal College of Pathologists**

**Wednesday 17 October 2018**

# **The Royal College of Pathologists**

The College is a professional membership organisation with charitable status, concerned with all matters relating to the science and practice of pathology. It is a body of its Fellows, Affiliates and trainees, supported by the staff who are based at the College's London offices.

# RCPath London offices...



# The Royal College of Pathologists

The College's Royal Charter, Ordinances and By-Laws define the objectives of the College as:

- To advance the science and practice of pathology
- To further public education in the field of pathology
- To promote study and research in pathology and disseminate the results

The College has no regulatory authority.

# Training Curricula

Higher Specialist Scientific Training (HSST) curricula must be approved by the Education and Training Scrutiny Group of Health Education England (HEE) before they are published. Clinical scientist specialties are identified by 'HSST' appearing next to the relevant specialty.



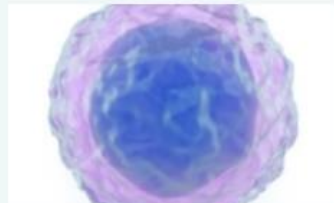
Analytical Toxicology HSST



Chemical Pathology



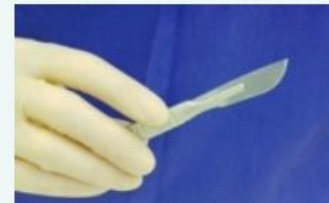
Clinical Biochemistry HSST



Clinical Immunology HSST



Diagnostic Neuropathology



Forensic Histopathology



Genetics HSST



Haematology HSST



Histocompatibility & Immunogenetics HSST

# FRCPath Examinations

Part 1 – Test of knowledge


Part 2 – Test of practical application of knowledge

HOMEPAGE > TRAINEES > EXAMINATIONS [Share This](#)


## EXAMINATIONS

The College sets the standard for the postgraduate pathology examinations in the UK. It also has a number of Part 1 overseas examination centres to meet the demand from international medical graduates who aspire to become Fellows of the College.


The College develops and delivers the FRCPath, Diploma and Certificate examinations which are offered across 20 pathology specialties, relying on the ongoing support of our Fellows.




**Stage A Examination**




**Examinations by specialty**




**BMS Examinations - Histopathology Reporting**




**Regulations, guidelines and policies**



**Examinations news and dates**



**Apply and Pay Online**



**Examination results**

**Examinations news and dates**

BMS Examinations - Histopathology Reporting

Exam results

**Cost of training**

**APPLY FOR AN EXAMINATION**

Applications for all 2018 examinations are now closed.

Applications dates for the 2019 examination sessions will be published soon.

**EXAMINATIONS FREQUENTLY ASKED QUESTIONS**

Information regarding the College examinations including eligibility to sit them, applications and results. Potential applicants are advised to read these before either making an application or contacting the Examinations Department.

**CONTACT US**

Examinations

# FRCPath examinations

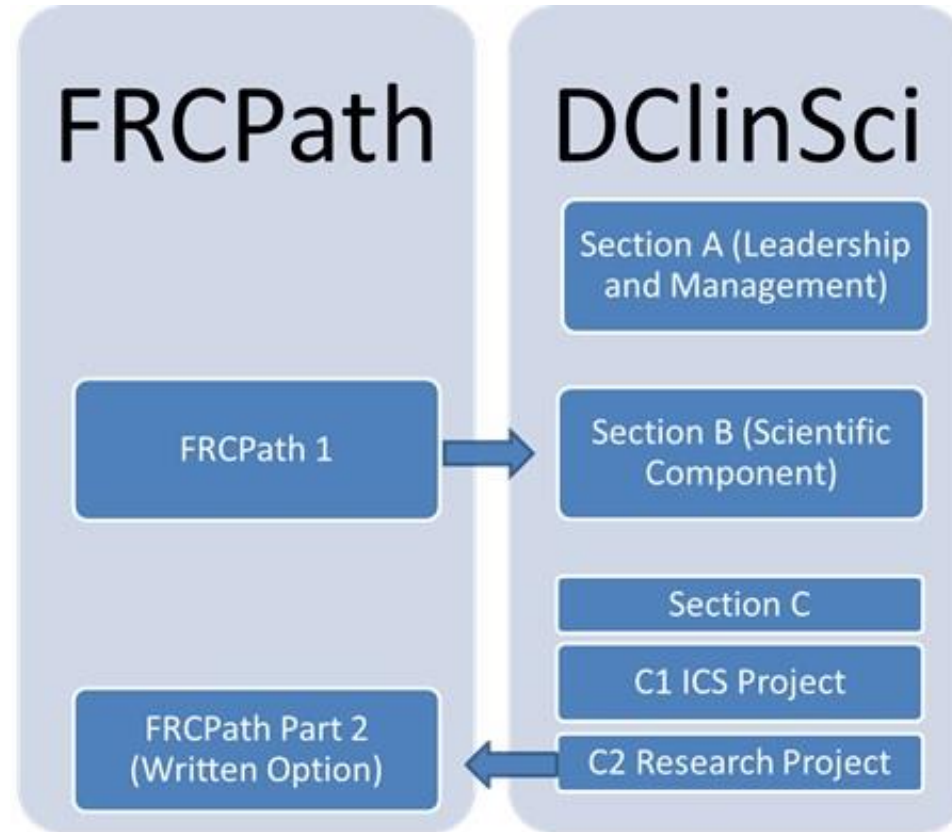
- Two sessions a year – Spring and Autumn
- Applications period
  - December to beginning of January (Spring session)
  - June to beginning of July (Autumn session)
- FRCPath Part 1: March and September (all on same day)
- FRCPath Part 2: March – April or September – November (depends on the specialty)

# FRCPath/DClinSci/ICS

- MAHSE partner Universities will accept a pass in the FRCPath Part 1 examination in a relevant specialty in place of the Professional Doctorate (DClinSci) Section B.
- The Royal College of Pathologists will accept the research component of the Professional Doctorate (DClinSci) in a relevant specialty as the written option for the FRCPath Part 2.
- The NSHCS has clarified that the trainees can utilise elements from FRCPath Part 2 and/or the DClinSci Section C as the basis of their ICS Project report.



# FRCPath and DClSci



| Specialty                               | Part 1 (Autumn)   | Part 2 (Spring)   |
|---|---|---|
| Clinical Biochemistry                   | 125 MCQs (from Autumn 2018)   | Module 1 – 19 station OSPE, bench practical<br>Module 2 – cases and calculations, critical appraisal, structured oral examination<br>Module 3 – written project |
| Genetics                                | Paper 1 – essays (4 of 5)<br>Paper 2 – 20 SAQs  | Practical – two scenario based papers<br>Structured oral examination<br>Written project   |
| Haematology                             | Paper 1 – 4 essays covering coagulation, transfusion, general haematology and haem-onc<br>Paper 2 – 20 SAQs | Practical – three hour written paper<br>Structured oral examination<br>Written project  |
| Histocompatibility and Immunogenetics   | Paper 1 – essays (4 of 5)<br>Paper 2 – 20 SAQs  | Practical – two scenario based papers<br>Structured oral examination<br>Written project   |
| Immunology                              | Paper 1 and 2 – 4 of 5 questions covering essays and short notes  | Practical – 6 x 1 hour stations<br>Structured oral examination<br>Written project   |
| Medical Microbiology                    | 125 MCQS  | 2 day practical examination covering essays, critical appraisal, short answer questions, practical scenarios and an OSPE  |
| Molecular Pathology of Acquired Disease | Paper 1 – essays (4 of 5)<br>Paper 2 – 20 SAQs  | Practical – three hour written paper<br>Structured oral examination<br>Written project  |
| Reproductive Science                    | Paper 1 – essays (4 of 5)<br>Paper 2 – 20 SAQs  | Practical – three hour written paper<br>Structured oral examination<br>Written project  |
| Toxicology (under review)*              | 2 x written papers<br>Practical examination   | Structured oral examination<br>Written project  |
| Transfusion Science                     | Paper 1 – essays (4 of 5)<br>Paper 2 – 20 SAQs  | TBC   |
| Virology                                | 125 MCQS  | 2 day practical covering two written papers and two OSPE papers   |

# Exam changes

**Reproductive Science: FRCPATH Part 1 practical moved into FRCPATH Part 2 from Autumn 2017**

**Molecular Pathology of Acquired Disease FRCPATH Part 2 introduced in Autumn 2017**

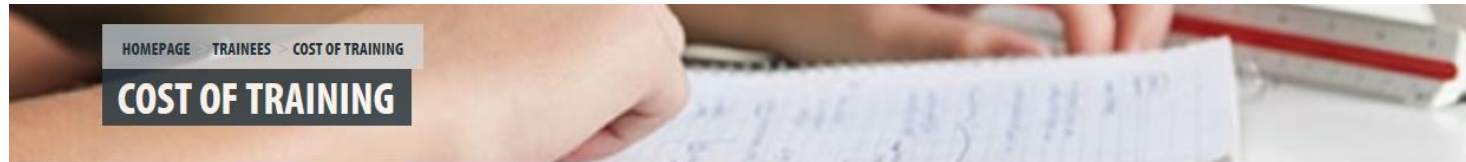
**Genetics: FRCPATH Part 1 practical moved into FRCPATH Part 2 from Spring 2018**

**H&I: New format Part 1 written from Autumn 2017 and FRCPATH Part 1 practical moved into FRCPATH Part 2 from Autumn 2018**

# Tax deductibility

- If you are a Clinical Scientist in an HSST programme and a UK tax payer both your examination fees are a tax deductible expense and you are eligible for full tax relief.
- This could save you between 20% and 40% of your fees and you can make a retrospective claim within 4 years of the end of the tax year that you spent the money.

# Communications



The Council of the Royal College of Pathologists has agreed that the following principles should underpin the College's approach to apportioning the costs of training, assessment and examinations:

#### TRANSPARENCY

The College will provide trainees and Fellows with an appropriate *breakdown of the costs* of supporting training, assessment and examination.

#### ACCOUNTABILITY

The College is committed to *minimising the cost* of training, assessment and examinations commensurate with maintaining the high quality of training programmes and an appropriate standard for trainees completing training and entering the professions.

#### COLLEGIALITY

Expertise in this area within the College is shared across specialties and it is appropriate that the *costs of the examinations* are also shared equitably; in practice this means that larger specialties support the costs in smaller specialties.

#### FURTHER INFORMATION ABOUT COSTS

- [FRCPath exam fees](#)
- [RCPATH trainee registration fees](#)
- [RCPATH membership fees](#)
- [Tax deductibility](#)
- [Annual Report and accounts](#)
- [HEE Supporting doctors in training](#)
- [Academy of Medical Royal Colleges Cost of Training 2017](#)

[Training](#)

[Assessment](#)

[Examinations](#)

[Cost of training](#)

[Breakdown of costs](#)

[Minimising cost](#)

[Cost of exams](#)

[Tax deductibility](#)

## RCPATH social media



[facebook.com/rcpath](https://facebook.com/rcpath)



[twitter.com/rcpath](https://twitter.com/rcpath)

Website [www.rcpath.org](http://www.rcpath.org)



The Royal College of Pathologists  
Pathology: the science behind the cure

# **The Role of the Royal College of Pathologists and FRCPath**

**Joanne Brinklow**

**Director of Learning**

**The Royal College of Pathologists**

**Wednesday 17 October 2018**